

HAPPY
HOLIDAYS!

Season greetings from your relatives on the Bennion Family Executive Committee! This issue of the Recorder consists of reproductions of all known photographs or paintings of Samuel & John Bennion and their wives. Sometimes it's hard to distinguish between a photograph and painting because photos have been retouched and/or copied many times, and paintings are often incredibly realistic.

As the footnotes on each of the following pages indicate, many of these photos are sourced from copies of copies of copies. For example, we have been unable to locate the negatives which were used for the photos in the original editions of Bennion Family History volumes I, II, and III. Consequently, many of the photos in this Recorder were created directly from books, resulting in another level of grain and a decrease in clarity. If you have a higher quality version of any of the photos shown on these pages, please contact us so we can improve the quality of the copies we make.

This issue of the Recorder represents the start of an attempt by the Executive Committee to establish a central repository for photos of Samuel, John, and their six wives. If you have any photos other than those shown on the following pages, please contact us and let us make copies for the central files. We are not asking

Contents

Season's Greetings.....	1
Samuel Bennion.....	2
Mary Bushell.....	3
Rhoda Jones.....	4
John Bennion.....	5
Esther Wainwright.....	6
Esther Ann Birch.....	7
Mary Turpin.....	8

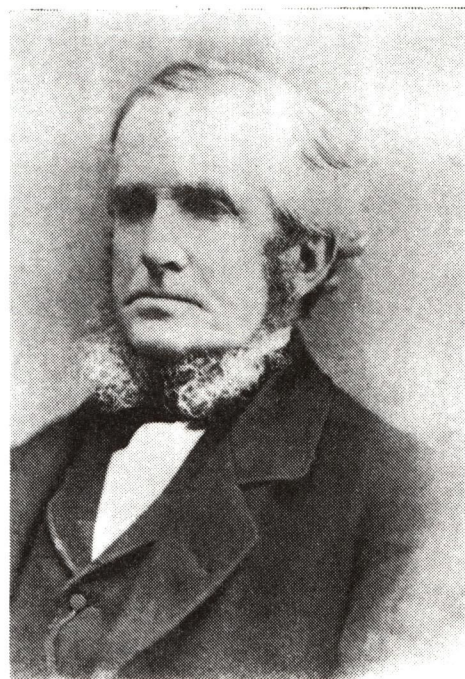
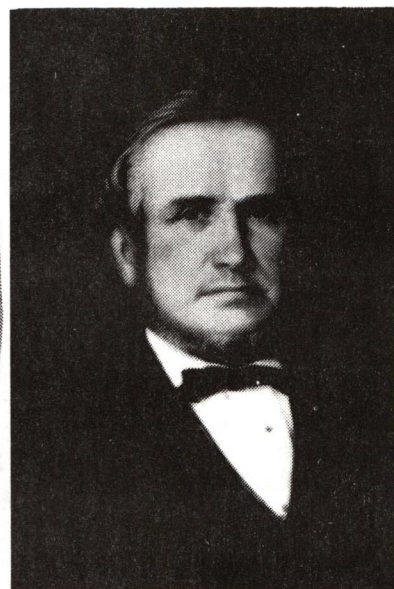
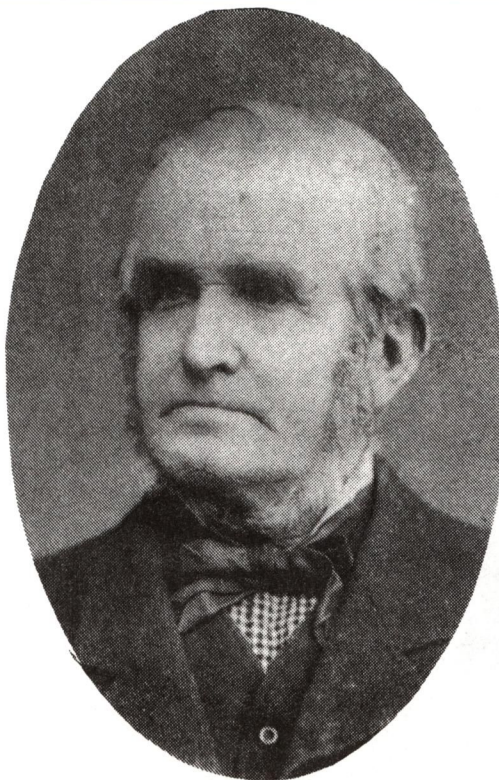
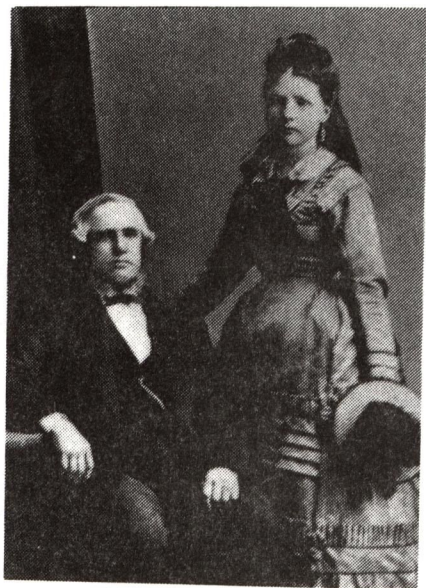
anyone to sacrifice heirlooms, but rather to make the highest possible quality reproductions available to all family members. We are considering giving a high quality negative and print of each photo/painting to the Utah Historical Society, which is easily accessible to most of us and very cooperative about allowing visitors to make and/or order copies.

Samuel's wives are Mary Bushell, Sarah Williams, and Rhoda Jones. There are no known photographs of Sarah (she also had no surviving posterity), and so you will not find a page devoted to her. John's wives are Esther Wainwright, Esther Ann Birch, and Mary Turpin.

The footnotes contain what the Executive Committee knows about each photo/painting. Although it is easy to guess the dates and/or ages, we have chosen not to do so. If you have any additional information concerning these pictures, please contact us so we can improve our documentation.

The pages with pictures are printed on acid-free 100% rag paper for long-lasting enjoyment.

SAMUEL BENNION (1818-1889)



Upper Left: Samuel with his daughter Alice Jane.
Photo taken July 4, 1874 in Chester, England
while Samuel was serving a mission.

Lower Left: Taken from Bennion Family of Utah vol. 2.

Upper Middle: Taken from Bennion Family of Utah vol. 3.

Upper Right: Color painting by Daniel Weggeland. Original in possession of Mary Lois Wheatley.

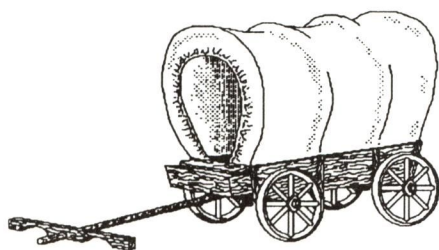
Lower Right: Taken from Bennion Family of Utah vol. 1.

MARY BUSHELL (1816 - 1872)



Left: Color painting by Daniel Weggeland.

Right: Taken from Bennion Family of Utah vol. 1



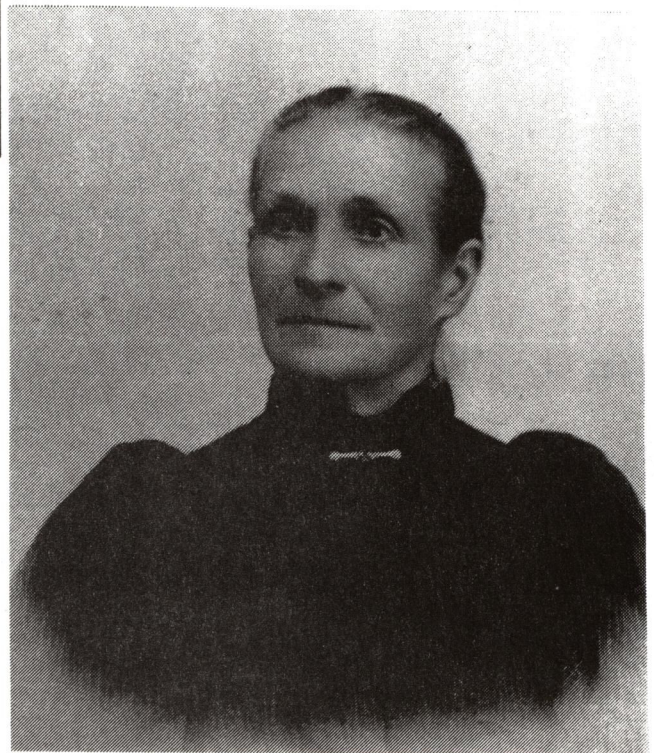
RHODA JONES (1840 - 1914)



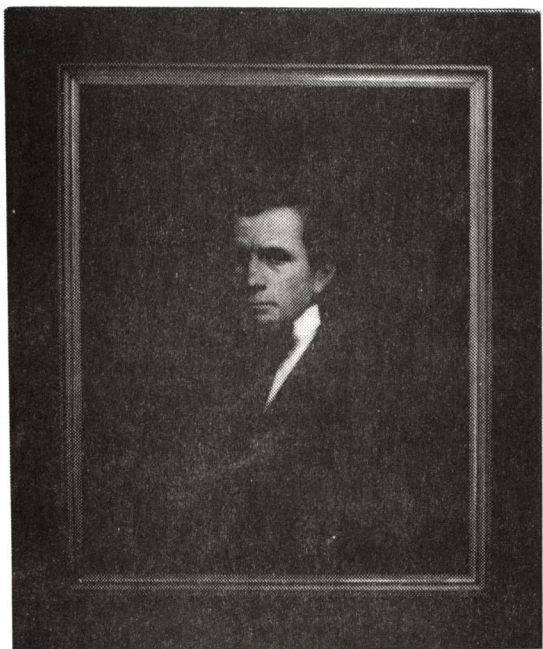
Upper Left: Taken from the original edition of Bennion Family of Utah vol. 1.

Upper Right: Taken from the reprinted edition of Bennion Family of Utah vol. 1.

Lower Right: Photo on file at the Archives of the Church of Jesus Christ of Latter-day Saints. Given to the LDS Church by her granddaughter Zora Nelson.



JOHN BENNION (1820 - 1877)



Upper Left: Painting by Daniel Weggeland.
Original on display in Daughters of Utah Pioneers
Memorial Museum in Salt Lake City.
Upper Right: Close-up of Weggeland portrait.

Lower Left: Taken from Bennion Family of Utah
vol. 2.
Lower Right: Taken from Bennion Family of
Utah vol. 1.

ESTHER WAINWRIGHT (1817 - 1902)



Left: Taken from Bennion Family of Utah vol. 1 (original edition)

Right: Taken in Liverpool, England, probably in 1841 or 1842.
Photo in possession of Ruth Rogers.

ESTHER ANN BIRCH (1833 - 1909)



Upper Left: Taken from Bennion Family of Utah
vol. 1.

Lower Left: Taken from Bennion Family of Utah
vol. 3.

Upper Right: Photo on display in Daughters of
Utah Pioneers Memorial Museum in SLC.

Lower Right: Photo of three Birch sisters who
crossed the Plains together (l to r): Esther Ann,
Sarah, and Elizabeth. Copy in possession of
Kathie Pincock.

MARY TURPIN (1841 - 1914)



Upper Left: Taken from
Bennion Family of Utah
vol. 1.

Upper Right: Taken from
Bennion Family of Utah
vol. 3.

Lower Right: Photo of Mary
Turpin Bennion with the
three eldest sons of her
daughter Zina Bennion
Cannon (l to r): Milton,
John, and Paul. Copy in
possession of Elaine Nichols.



MERRY CHRISTMAS & HAPPY NEW YEAR

From the Bennion Family Executive Committee

President	Robert G. Bennion 2661 Evergreen Ave. Salt Lake City, UT 84109	(801) 484-8308
Vice President	John E. Bennion 2166 Parleys Terrace Salt Lake City, UT 84109	(801) 466-7524
Secretary	Eileen B. McKean 2420 Emerson Ave. Salt Lake City, UT 84108	(801) 582-8567
Treasurer	David R. Sharp 5327 Mountain Men Dr. Kearns, UT 84118	(801) 966-6603
Computer Coordinator	Steven E. Bennion 1355 Dover Salt Lake City, UT 84108	(801) 582-1300
Genealogical Research Coordinator	Helen S. Madsen 3376 Lee Ann St. Salt Lake City, UT 84119	(801) 968-7848
Family History Coordinator	Ruth W. Rogers 1941 N. 360 East Provo, UT 84604	(801) 377-9888

ADDITIONAL VOLUNTEERS NEEDED!!

**The
Bennion
Family**

Recorder

Bennion Family Association
c/o Steve Bennion
1355 Dover
Salt Lake City , Utah 84108

Bulk Rate U.S. Postage PAID S. L. C., Utah Permit No. 5385
--

##1567F
MR. & MRS. CHET ROGERS
1941 NORTH 360 EAST
PROVO UT 84604